

Are you worried about the health of your digital life?

We help protect your personal information and finances.

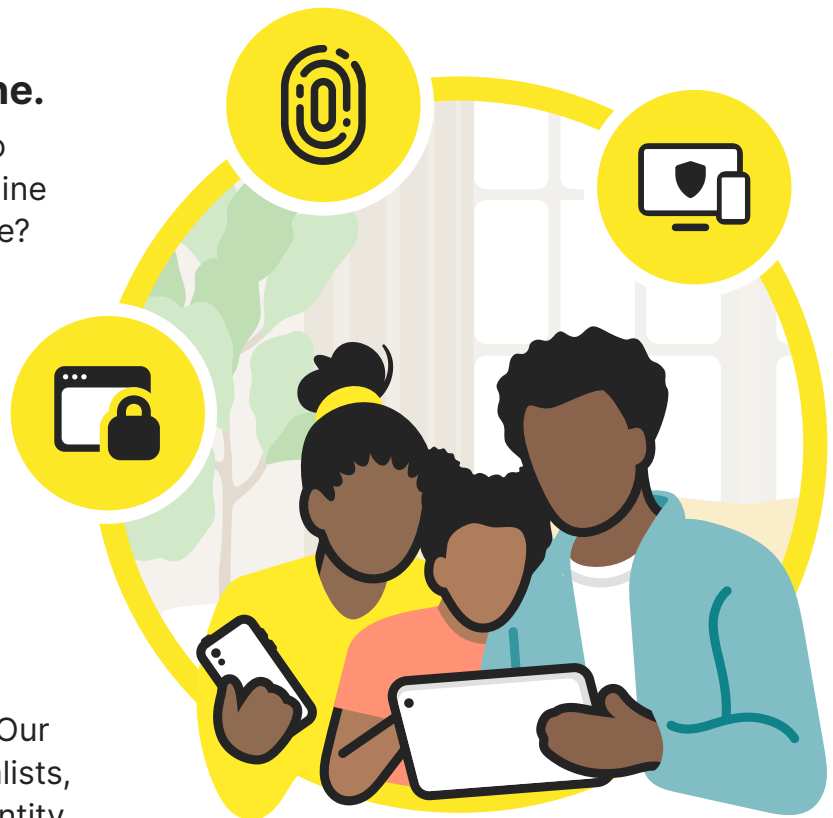
Your identity is valuable, regardless of what you own or how much money you make. We help protect your finances by monitoring your personal information for possible identity theft and financial fraud.

We provide protection when you connect online.

Everybody is scrolling. How do you know if the ad you see online could take you to a harmful site? We block thousands of digital threats every minute - even before they can infect your computers, phones, and tablets.

We're here to help when you need it.

If your identity got stolen, would you know who to call? Or where to turn for support? Our U.S.-based Restoration Specialists, will personally handle your identity theft case until it's resolved.





Has your personal info been exposed in a data breach?


Try our free [Threat Detector](#) tool to uncover potential threats to your identity.





All plans include these features plus more, and are easily accessible in your member dashboard:

 **Identity Alerts with Credit Monitoring¹** alerts you if we find potentially fraudulent or suspicious activity surrounding your personal info including new account opening, credit card usage, and data breaches.

 **Device Security** protects your mobile devices, tablets, and computers from hackers, viruses, malware, vulnerable websites, and other online threats.

 **Norton™ Secure VPN** is a Virtual Private Network (VPN) that helps protect your sensitive information, browsing history, online activities, and webcam.

 **Parental Control[∇]** makes it easy to monitor your child's online activities and view their search history so they stay safer online.

 **Million Dollar Protection™ Package⁺⁺⁺** reimburses stolen funds, personal expenses, and provides coverage for lawyers and experts up to \$1 million each.

Enroll Now!

Benefit Plans are **60% less** than the retail equivalent.

Compare to see which plan fits your needs.

Essential	Premier	Premier Plus
<p>\$8.49 Employee Only \$16.98 Employee + Spouse \$14.86 Employee + Children \$23.36 Employee + Family</p> <ul style="list-style-type: none"> ✓ Credit Monitoring (1B) ✓ Device Security (3 devices, family gets 6) ✓ PC Cloud Backup (10 GB) 	<p>\$21.25 Employee Only \$42.50 Employee + Spouse \$30.81 Employee + Children \$52.06 Employee + Family</p> <ul style="list-style-type: none"> ✓ Credit Monitoring (3B) ✓ Device Security (5 devices, family gets 10) ✓ PC Cloud Backup (50 GB) 	<p>\$25.49 Employee Only \$50.98 Employee + Spouse \$36.11 Employee + Children \$61.61 Employee + Family</p> <ul style="list-style-type: none"> ✓ Credit Monitoring (3B) ✓ Device Security (10 devices, family unlimited) ✓ PC Cloud Backup (500 GB) ✓ Cyber Crime Coverage ✓ Norton AntiTrack

Many more features are included! To learn more, visit: www.Norton.com/EssentialPremPremPlus

Already a member? Don't forget to cancel your existing membership just prior to your benefit effective date by calling **800-607-9174**.

No one can prevent all cybercrime or identity theft.

LifeLock does not monitor all transactions at all businesses.

¹ Credit features require setup, identity verification and sufficient credit history by TransUnion and/or Equifax. Credit monitoring features may take several days to activate after enrollment.

[∇] Norton Parental Control features are not supported on Mac.

⁺⁺⁺ Reimbursement and Expense Compensation, each with limits of up to \$1 million for Benefit Essential, Premier, and Premier Plus, and up to \$50,000 for LifeLock Benefit Junior (\$25,000 reimbursement coverage and \$25,000 fraudulent withdrawals). All plans include up to \$1 million in coverage for lawyers and experts. Cyber Crime Coverage, if applicable, covers up to \$50,000 for covered expenses per Plan. All benefits are issued and covered by third party partners. Policy terms, conditions, and exclusions at: gendigital.com/legal.

Copyright © 2024 Gen Digital Inc. 60 E Rio Salado Pkwy STE 1000, Tempe, AZ 85281

NEB19388FL